

# CASE STUDY

For further information on our carpentry & joinery services, or for an informal discussion about your project requirements please contact us directly:

Maulden Vale Business Park  
29, Clophill Road,  
Maulden, Bedfordshire.  
MK45 2AA

T: 01525 409400

F: 01525 402259

W: [www.mjhillson.co.uk](http://www.mjhillson.co.uk)



## Sheffield Student Village-Phase 3

**Client:** Bovis Lend Lease

**Sector:** Supply & Fix Joinery Packages

**Budget:** £900,000

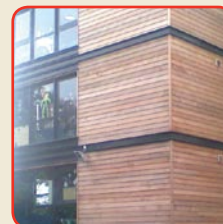
**Duration:** 28 weeks

### Project specifications:

M J Hillson Limited were contracted to supply and install 900 CPL beech veneered door sets, 12,000 meters of MDF skirting, 300 metal riser door sets, 112 fire back boards for extinguishers, 1,000 meters of curtain battens and 515 stainless steel toilet pod furniture from China. The laundry rooms and cleaners cupboards were fitted out with spur shelving. The pod furniture included shower curtain rails, shower baskets, soap dishes, toilet brush holders, mirrors, steel shelving and tooth brush holders. The door sets achieved FIRAS accreditation and installation certificates were handed to the client on handover. All materials were procured from sustainable sources with particular reference to FSC guidelines.

### Conclusions:

The nature of the design and the environmental issues made this, at times, a difficult project to co-ordinate. Labour was resourced locally which worked to an advantage when dealing with late demands from the client and week end working. The project was completed on time and to programme. High standards achieved at speed.



**Staff and operatives worked exceptionally hard to achieve a very successful handover, on programme and with very few defects.**

Robert Dyson, Bovis Lend Lease Project Manager

Joinery solutions built around your needs