

CASE STUDY

For further information on our carpentry & joinery services, or for an informal discussion about your project requirements please contact us directly:

Maulden Vale Business Park
29, Clophill Road,
Maulden, Bedfordshire.
MK45 2AA

T: 01525 409400

F: 01525 402259

W: www.mjhillson.co.uk



Addenbrooke's Hospital

Client: Alfred McAlpine Capital Projects Ltd

Sector: Supply & Fix Joinery Packages

Budget: £1,600,000

Duration: 64 weeks

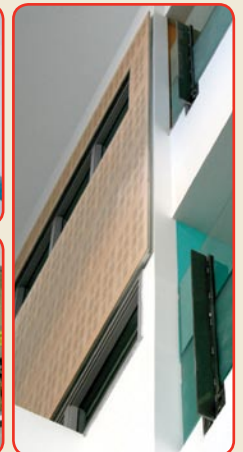
Project specifications:

Cambridge University Hospitals Addenbrooke's Elective Care, Genetics & Diabetes Centre

The contract was let in two packages. Timber Door Sets and Timber Glazed Screens. M J Hillson Limited were contracted to supply and fix 1300 door sets of various types and finishes which consisted of Formica, beech, paint grade and PVC rapped and associated mouldings. Also included was the fitting of ironmongery and over 6000 various sizes of trolley plates and kick plates. The timber glazed screens were all paint grade but had to conform to 38db acoustic ratings of sound insulation.

Conclusions:

This was a challenging project which demanded a high and close level of supervision between both parties. With a lack of storage area's strict loading regimes and just in time deliveries were required. The project was carried out over 7 floors and a vast area which made controls paramount to achieving the required standard of quality and enabling all programmed dates being met. All works were carried in accordance with the HTM58 specification.



“Their management team and operatives have worked tirelessly to complete within their programme and have contributed greatly in helping Alfred McAlpine. I would have no hesitation in working alongside M J Hillson again.”

John Mitchell, Alfred McAlpine Capital Projects Limited

Joinery solutions built around your needs